

# Joe's NEWS

Selected information from the city magazine "ONOJO"

Nov. 15th, 2020 issue (No.1)

## Acceptance of Application for Nursery School Enrollment for the new academic year to begin

If you are planning to use a nursery school, a small-sized nursing establishment or an authorized "Kodomo-En" (nursery section) for the new academic year (from Apr.1<sup>st</sup>, 2021 - Mar.31<sup>st</sup>, 2022), please submit an enrollment application to Childrearing Support Section of Onojo City. Even if you once applied for the academic year 2020 and your child is now being taken care at a nursery school, a small-sized nursing establishment or an authorized "Kodomo-En", you are required to take the same procedure again.

\*"Small-sized nursing establishment" will accept infants aged 0-2 as of Apr.1<sup>st</sup>, 2021 and Authorized "Kodomo-En" (nursery section) will accept infants aged 0-5 as of Apr.1<sup>st</sup>, 2021. The application period and method will be same as the ones of authorized nursery schools. "Small-sized nursing establishment" is a nursing facility which is authorized by Onojo City and takes care of up to 19 infants. Authorized "Kodomo-En" is a combined facility of a nursery school and a kindergarten which is authorized by Fukuoka Prefecture.

### ●Distribution of Application Form

available at Childrearing Support Section, each community center

\*You can download from the HP of Onojo City

### ●Distribution Date from Tue, Nov. 24<sup>th</sup>

### ●Eligible Infant

An infant aged 51 days or older as of the day of enrollment and whose guardian(s) is unable to take care of the infant due to any of the following reasons.

- ◇Working outside the house or at home ◇Sickness
- ◇Nursing sick person ◇Receiving Education

### ●Application Period

#### ◇Enrollment in April

**Starting Date:** Wed, Nov. 25<sup>th</sup>

**Closing Date:** 1<sup>st</sup> Period: Mon, Dec. 28<sup>th</sup>

2<sup>nd</sup> Period: Sat, Feb. 27<sup>th</sup>, 2021 till 12:30pm

\*The 2<sup>nd</sup> application period will be arranged **only when** there are nursery schools, small-sized nursing establishment or authorized "Kodomo-En" which are still able to accept applications after the 1<sup>st</sup> period application. (Filing application within the 1<sup>st</sup> application period is highly recommended.)

(Continued on the left column)



## Acceptance of Application for Nursery School Enrollment for the new academic year to begin

(Continued from the left column)

#### ◇Enrollment in May and later

Please submit the documents 2 months prior to the start of your child care. Application is closed on the last day of every month. In case that the city office is closed on the last day of the month, please apply by the day before the last day.

e.g. Start in May ⇒ Submission by the end of March.

◇In the case of enrollment in March 2021, the deadline is Mon, Dec. 28<sup>th</sup>, 2020.

### ●How to Apply

Please visit Childrearing Support Section and submit the application form and necessary documents.

### ●Remarks

◆Not all the applications will be admitted in the case of exceeding the quota of each nursery school, small-sized nursing establishment or authorized "Kodomo-En". Also, the admission of an infant is decided in accordance with the degree of necessity of child care, not on first-come, first-served basis.

◆Make sure to fill out the application form for academic year 2021.

◆Before submitting your application, please make sure to visit at least one of the nursery schools you have chosen together with your child. (Visiting the first choice nursery school is preferred.) Otherwise, your application may not be accepted.

\*You make an appointment at each nursery school by yourself.

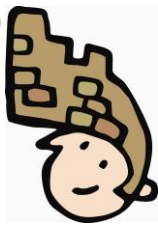
◆In the case of failure to submit necessary documents such as a certificate of employment, a certificate of childrearing leave or submission of incomplete documents, your application will not be accepted.

◆As *Narashi Hoiku* (Temporary day care for getting accustomed to a new environment) is included in the regular day care period, please apply by the deadline of the month in which *Narashi Hoiku* will be done.

(continued on No.2)

For application or further information, please contact Local Culture and Industry Promotion Section  
Tel: 092-580-1876 Fax: 092-573-7791  
E-mail: sangyo@city.onojo.fukuoka.jp





# Joe's NEWS

Selected information from the city magazine "ONOJO"

Nov. 15th, 2020 issue (No.2)

## Acceptance of Application for Nursery School Enrollment for the new academic year to begin (Continued from No.1)

Authorized Nursery Schools, Small-sized Nursing Establishment and Authorized "Kodomo-En" inside Onojo City

Area	Name	Address	Phone No.
North	Onokita Nursery School	1-7-30 Mikasagawa	092(580)8522
	Tsutsui Nursery School	5-15-18 Tsutsui	092(585)6824
	Tanoshii Nursery School	4-18-11 Yamada	092(558)4164
	Cosmos Nursery School	4-14-3 Tsutsui	092(558)4614
East	Otogana Nursery School	2-3-57 Otogana	092(503)4000
	Ogi Nursery School	2-10-1 Oike	092(504)1421
	Mikasanomori Nursery School (*1)	2-5-5 Naka	092(504)1000
	Mikasagawa Nursery School (*2)	5-3-7 Mikasagawa	092(580)9555
	Onohigashi Nursery School (*3)	1-10-37 Otogana	092(503)2895
Central	Onominami Nursery School	1-18-28 Shimoori	092(571)3233
	Mizuho Nursery School	1-6-17 Kawarada	092(581)5904
	Nozomi Aijien	4-1 Shimoori Danchi	092(582)4656
	Rhythm Nursery School	1-8-1 Chuo	092(572)6455
	Yasashii Nursery School	4-1-45 Shirakibaru	092(915)1221
	Ori Nursery School	2-17-5 Kamiori	092(558)7640
	Jibunmirai Nursery School Shimoori (*1) (*2)	1-9-24 Shimoori	0120(14)4230
	Ono Nursery School (*3)	1-2-27 Akebono-machi	092(572)8664

(\*1) Scheduled to open in April 2021

School Name: Mikasanomori Nursery School (tentative)

(\*2) Small-sized Nursing Establishment (\*3) Authorized "Kodomo-En"

(Continued on the upper right column)

## Acceptance of Application for Nursery School Enrollment for the new academic year to begin

Authorized Nursery Schools, Small-sized Nursing Establishment and Authorized "Kodomo-En" inside Onojo City

Area	Name	Address	Phone No.
South	Minamigaoka Nursery School	279-1 Oaza Ushikubi	092(596)0218
	Hirano Nursery School	4-7-20 Ushikubi	092(596)6200
	Hijiri Nursery School	1181-3 Oaza Ushikubi	092(589)2323
	Chikushi Nursery School (*3)	2-2-18 Yokomine	092(596)4959

(\*1) Scheduled to open in April 2021

School Name: Mikasanomori Nursery School (tentative)

(\*2) Small-sized Nursing Establishment (\*3) Authorized "Kodomo-En"

## Onojo City Comprehensive Disaster-preparedness Drill at Home

Onojo City conducts comprehensive disaster-preparedness drill for all Onojo citizens.



● **Date and time** Sat, Nov. 28<sup>th</sup> at 2:05pm

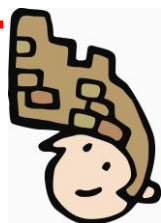
● **Venue** at each house

This drill is held for Onojo citizens to take appropriate actions to protect their lives and mitigate the damage when disasters occur. We do not gather for the drill this year for measures against novel coronavirus. So please join at each house.

This drill will be held assuming the occurrence of an earthquake. Siren of Earthquake Early Warning, EEW, (緊急地震速報) will sound at 2:05pm. When you hear the siren, practice the 3 actions to protect your lives (①Crouch down, ②Protect your head and body, ③Take cover until a quake stops) at home. For details, please contact us.

For application or further information, please contact Local Culture and Industry Promotion Section  
Tel: 092-580-1876 Fax: 092-573-7791  
E-mail: [sangyo@city.onojo.fukuoka.jp](mailto:sangyo@city.onojo.fukuoka.jp)





# Joe's NEWS

Selected information from the city magazine "ONOJO"

Nov. 15th, 2020 issue (No.3)

## Have you applied for? Temporary Special Benefit for Single-parent Households

Benefit will be provided to support single-parent households.

● **Eligibility** Single-parent households and those meeting one of the following conditions

### ◇ Basic Benefit

① Those receiving public pensions and not receiving any child-rearing allowance and the total income in 2018 is under the basic income amount in each number of dependents.

② Those whose income (estimated income for 1 year (12 times of one month income after or in February)) is down to the same level as those receiving child-rearing allowance and is under the basic income amount in each number of dependents due to the influence of covid-19. (Sudden change of family budget)

\*Include those who do not apply for child-rearing allowance.

### ◇ Additional Benefit

• Those who received a child rearing allowance in June 2020 and Basic Benefit and whose income decreased due to the influence of COVID-19.

• Those who are applicable to Basic Benefit ① mentioned above and whose income decreased due to the influence of COVID-19.

\*Include cancellation of job offer and difficult situation for job hunting due to COVID-19.

\*Except persons receiving public assistance

● **Benefit Amount** \*Benefit payment is one-time-only.

### ◇ Basic Benefit

50,000 yen per household, 30,000 yen per child after the second child

### ◇ Additional Benefit

50,000 yen per household

### ● How to apply

Please bring the necessary documents to Child Rearing Section or send by post.

### ◇ Basic Benefit

• Application form (distributed at the section in charge or download from the HP of Onojo City) • Documents to prove your income • Documents to identify yourself • Documents to tell your bank account such as bank book, cash card

### ◇ Additional Benefit

• Application form (distributed at the section in charge or download from the HP of Onojo City) • Documents to prove that your income decreased

● **Application Deadline** Fri, Feb. 26<sup>th</sup>, 2021

## Take Preventive Measures against Influenza

Influenza is a common infectious disease caused by influenza virus. The virus goes around from Dec. to Mar. every year. It is highly infectious and the number of people who are infected with that virus will rise rapidly if it goes around. The routes of transmission are generally through droplets and contacts and they are the same as novel coronavirus. Take measures to prevent infectious diseases.

### Preventive measures

- Wash and disinfect your hands well and frequently.
- Follow the below "cough etiquette".
  - ◇ Face away from others and cover your mouth and nose with tissue.
- Keep your distance from others.
  - ◇ Refrain from going out to crowded places.
  - ◇ Wear a mask.
- Get enough rest and eat a balanced diet.

\*Pregnant women, infants, seniors and those who have chronic diseases are at higher risk of serious influenza and complications related to influenza. Taking an Influenza vaccination is effective before it is going around. When you take a vaccine, please consult with a doctor.

## Norovirus Prevention Information

Please protect yourself from Norovirus.

### Preventive measures

- Wash and disinfect your hands well and frequently.
- Make sure the food is fully heated.

Joe'BOX



Don't feel alone.

Please email us at

[sangyo@city.onojo.fukuoka.jp](mailto:sangyo@city.onojo.fukuoka.jp)

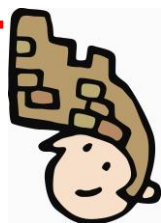
[if you have any problems living in Onojo City.](#)

For application or further information, please contact Local Culture and Industry Promotion Section

Tel: 092-580-1876 Fax: 092-573-7791

E-mail: [sangyo@city.onojo.fukuoka.jp](mailto:sangyo@city.onojo.fukuoka.jp)





# Joe's NEWS

Selected information from the city magazine "ONOJO"

Nov. 15th, 2020 issue (No.4)

## Let's make a Christmas wreath with natural materials!

### ●Date and Time

Sat, Dec. 12<sup>th</sup> 10:00am - 2:00pm (Reception: from 9:30am-)

### ●Details

- ◇Walk in a forest observing plants with the guide of a forest instructor
- ◇making a Christmas wreath with branches of trees and seeds taken at Mt. Shoji

\*In the case of rain, talk about trees and seeds will be held.

●Limit 15 people (First-come first-served basis)

●Fee 500yen (including insurance fee)

●Items to bring ◇lunch box ◇drink

●Meeting Point Shioji Kenmin no mori Center

●How to apply Please call us

●Application Period Tue, Dec. 1<sup>th</sup> - Wed Dec. 9<sup>th</sup> \* Closed on Mon, Dec. 7<sup>th</sup>  
Reception Time: Weekday, 9:00am - 5:00pm

## Welfare Services for Single-Parent Families

Please make use of the following services if you are eligible.

### Single Parent Medical Service

●Eligible Person ◇Single mother household ◇Single father household  
◇Child with no parents

\*Income restrictions apply.

\*From the day your child enters an elementary school until the end of the fiscal year when your child turns 18 years old. (Infant Medical Service takes priority over this medical service for a child who has not yet entered an elementary school)

\*People who are under the protection of Public Assistance Act will not be subjected.

\*In case that a spouse has not been able to work for a long time due to his or her disability, the household is regarded as a single-parent family.

### ●Subsidy

Your co-payment amount covered by your health insurance will be aided.

\*You might be required to pay a partial amount.

\*If you not have Single Parent Medical Service Card, please consult us.

### ●How to apply for the service mentioned above

Please visit National Health Insurance and Pension Section

## Nobinobi Hiroba

Why don't you experience parent-child play with our day-care center staff?

●Subject Person Children 1 - 2 years and their guardians living in Onojo City  
\*Please consult as to participation of siblings.

### ●Date and Time

Date	Time	Venue
Thu, Dec. 10 <sup>th</sup>	10:15am-11:30am (Reception: 10:00am-)	Reiwa Kodomo Joho Center(Reiwa Children Information Center), Kosodate-oen (support for child raising) Floor (Sukoyaka Koryu Plaza 3F)
Wed, Dec. 16 <sup>th</sup>		
Thu, Dec. 24 <sup>th</sup>		

\*Multiple applications are not acceptable.

●Contents Making Christmas crafts

●Cost free

●Limit 15 groups / each day (First-come first-served basis)

●Application Period from Wed, Nov. 18<sup>th</sup> to Tue, Nov. 24<sup>th</sup> 9:00am - 5:00pm



## Application for Fukuoka Prefecture Housing Project

Fukuoka Prefecture Housing Project rooms are available. If you wish to apply, please receive the application handbook at local government offices.

●Application Period Thu, Dec. 10<sup>th</sup> - Fri, Dec. 18<sup>th</sup>

●How to Apply Send the application form attached in the handbook by postal mail using the addressee-printed envelope attached in the handbook. The postage must be borne by applicants.

\*Please check the application form (available only in Japanese) for further information about the housing.

Joe'BOX



Don't feel alone.

Please email us at

[sangyo@city.onojo.fukuoka.jp](mailto:sangyo@city.onojo.fukuoka.jp)

[if you have any problems living in Onojo City.](#)

For application or further information, please contact Local Culture and Industry Promotion Section

Tel: 092-580-1876 Fax: 092-573-7791

E-mail: [sangyo@city.onojo.fukuoka.jp](mailto:sangyo@city.onojo.fukuoka.jp)





# Joe's NEWS

Selected information from the city magazine "ONOJO"

Nov. 15th, 2020 issue (No.5)

## Welfare Services for Single-Parent Families

Please make use of the following services if you are eligible.

### Child-Rearing Allowance

● **Eligible Person** Mothers or fathers who provide care for their children who fall under any of the following conditions, or those who substitute for such mothers and fathers. \*In principle, this allowance will be paid until the following March 31<sup>st</sup> after the child reaches the age of 18 or under 20 years old as to children with disabilities.

- ◇ Child whose parents annulled their marriage <Divorce>
  - ◇ Child whose father (mother) passed away <Death>
  - ◇ Child whose father (mother) has a severe disability corresponding to a level equivalent to that stated in the relevant enforcement regulations
  - ◇ Child who has been abandoned for 1 year or more by his/her father(mother)
  - ◇ Child whose mother has been unmarried since childbirth
- \* The allowance is not paid in any of the following conditions.
- ◇ The relevant child and his/her father (mother) or rearer don't reside in Japan. (No address registered in Japan)
  - ◇ The relevant child stays at a child welfare facility.
  - ◇ The child's father (mother) or other guardian earns more than the specified amount.

● **Monthly Amount** (Maximum Amount)

- ◇ 43,160 yen per child

\*In the case of having two children, 10,190yen will be added and 6,110yen will be added per child from 3<sup>rd</sup> child.

\*Monthly payment will be reduced depending on the income of the child's father (mother).

● **Payment Month** odd month

\*Allowance for previous 2 months will be paid.

### Discount for Commuting Pass (JR only)

A person of the household which is receiving Child-Rearing Allowance can purchase a commuting pass of JR with 30% discount.

(Continued on the right column)

## Welfare Services for Single-Parent Families

### Day-to-day Living Support for Single-Parent Families

In the case of temporary necessity of child care service, a day-to-day living support service staff will visit a single-parent family.

● **Eligible Person**

- ◇ Single parent living in Onojo City who raises child/ren under 20 years old and falls under any of the following reasons.
- ◇ Widow living in Onojo City whose child/ren is/are 20 years old and over and falls under any of the following reasons.
  - ① Receiving education or other programs to help them become independent, Job hunting
  - ② Social reasons such as illness, taking care of family members, accidents, ceremonial occasions such as marriage or burial, working overtime, business trip, participation in public events held at school and so on.
  - ③ Working overtime regularly or other reasons related your work (Service for a parent who is bringing up a preschooler or an child/children who is/are attending elementary school.)

● **Details** ◇ Taking care of an infant/infants ◇ Serving meals ◇ Taking care of an applicant ◇ Purchasing daily living necessities

● **Hours**

- ①② within 80 hours per reason, within 160 hours in total a year
- ③ within 20 hours per month, within 120 hours in total a year

● **Charge** varies by income of the applicant

● **How to apply for all the services mentioned**

Please visit Childrearing Support Section

● **Remarks**

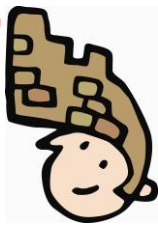
There are other supporting services for a single parent such as Subsidy for Self-support Education and Training Programs and Subsidy for High-level Skill Development Training Programs and so on. For further information, please contact us.

For application or further information, please contact Local Culture and Industry Promotion Section

Tel: 092-580-1876 Fax: 092-573-7791

E-mail: sangyo@city.onojo.fukuoka.jp





# Joe's NEWS

Selected information from the city magazine "ONOJO"

Nov. 15th, 2020 issue (No.6)

## Film Show and Picture-book Reading for Kids

16mm film show, reading picture books and handcraft lesson for kids will be held.

### ●Subject Person

- ◇Infants \*Infants must be accompanied by their guardians
- ◇Elementary School Students \*Participation of guardians is welcome.

### ●Details (Subject to change)

- ◆Film ◇Hanasaka Jisan  
(A Japanese classical story about the man who made flowers bloom)
- ◇The Band Concert (Mickey Mouse)  
(about 20 minutes)
- ◆Reading Picture Books (about 15 minutes)
- ◆Craft Making



### ●Limit 30 people (First-come first-served basis)

venue		date	Time
Community Center	Higashi (East)	Sat, Dec. 5 <sup>th</sup>	10:00am-11:30am
	Minami (South)	Sat, Dec. 19 <sup>th</sup>	

## Onojo Winter Illumination 2020

Winter illumination will be lit up during the period from Sun, Nov. 22<sup>nd</sup> to Fri, Dec. 25<sup>th</sup> to at Madokapia South Side Open Space. Various Events for this season will be held. Please come and enjoy if you are interested in.

### ●Illumination Period and Time

Sun, Nov. 22<sup>nd</sup> - Fri, Dec. 25<sup>th</sup> from 5:30pm to 10:00pm

## Have you paid National Health Insurance Tax?

The payment deadline of the 6<sup>th</sup> National Health Insurance Tax is Mon, Nov. 30<sup>th</sup>. Delinquent charge will be charged when the payment of these taxes is overdue. Please make sure to pay by the deadline.

### ●Delinquent Charge 8.9% annually

\*From the next day of the deadline to the day a month passes: 2.6% annually

## Steel Furniture Recycle Exhibition

Sale and transfer of used steel furniture for reusing purpose.

### ●Date and Time

Sun, Dec. 6<sup>th</sup> 8:30am - 4:00pm

### ●Subject Person

Onojo or Kasuga citizens

### ●Venue

Kasuga Onojo Recycle Plaza (6-2 Kasugakoen Kasuga city)

### ●Items

Steel furniture (roughly 200 units)

\*A family unit may apply for a piece of steel furniture.

### ●Price

Free of charge

### ●How to Apply

Fill in the application form (distributed at the venue) and submit it at the reception.

### ●Notes

- ◆Only visitors can apply for items.
- ◆If applications exceed the number of prepared items, a drawing will be held and the notification will be sent to winners.
- ◆If more than an application is submitted from a family unit, all applications of the family will be invalid.
- ◆Elected winners must pick up their items on Mon, Dec. 14<sup>th</sup> - Wed, Dec. 23<sup>rd</sup> from 9:00am to 3:30pm
- \*Except Sat, Dec. 19<sup>th</sup> and Sun, Dec. 20<sup>th</sup>
- \*Please keep to the schedule.

For application or further information, please contact Local Culture and Industry Promotion Section

Tel: 092-580-1876 Fax: 092-573-7791

E-mail: sangyo@city.onojo.fukuoka.jp





# Joe's NEWS

Selected information from the city magazine "ONOJO"

Nov. 15th, 2020 issue (No.7)

## Let's make a Christmas wreath with natural materials!

	Collecting materials	Making a wreath
date	Thu, Dec. 3 <sup>rd</sup> 10:00am-12:00pm *In the case of rain, to be cancelled.	Fri, Dec. 4 <sup>th</sup> 10:00am-12:00pm
Meeting Point	Ushikubi Kyosei-no-mori Forest	Onojo City Hall New Building 4 <sup>th</sup> Floor, 428 Meeting Room
Necessary Items	◇Cap ◇Towel ◇Cotton gloves ◇Drinks *Please join wearing casual wear as your clothes may get dirty when collecting.	◇ Bag to put your wreath in

\*If the day of collecting materials is cancelled due to rain, participants will only join on Fri, Dec. 4<sup>th</sup>. (Materials to make a Christmas wreath are prepared by the trust association.)

●**Limit** 20 people (First-come first-served basis)  
\*Those who can participate in both days.

●**Fee** Free

●**How to apply** Please call us

●**Application Period** Mon, Nov. 16<sup>th</sup> - Fri, Nov. 20<sup>th</sup>  
Reception Time: Weekday, 8:30am - 5:00pm



## 23<sup>rd</sup> Junior Tokimeki Culture Festival (28<sup>th</sup> Fukuoka Prefecture Culture Festival in 2020)

### 【Art Works Exhibition】

●**Date and Time** Sat, Dec. 5<sup>th</sup>, Sun, Dec. 6<sup>th</sup> 10:00am-4:00pm

●**Venue** Madokapia Multipurpose Hall (1<sup>st</sup> Floor)

●**Details** ◇Calligraphy ◇Plastic arts ◇Paintings, etc.

●**Fee** free

\*As to the part of performing arts, it will not be open to the public to prevent the spread of novel coronavirus.

## 2021's Coming of Age Ceremony

2021's Coming-of-Age-Ceremony will be held at Madokapia.

●**Dates** Mon, Jan. 11<sup>th</sup>, 2021 (National Holiday; Coming-of-Age Day)

●**Subject Person** born during Apr. 2<sup>nd</sup>, 2000 – Apr. 1<sup>st</sup>, 2001

●**Necessary Item** Admission Ticket

\*We will send the admission ticket in the middle of Dec. to subject persons who are registered in Onojo City as of Nov. 30<sup>th</sup>.

\*Even if you are not registered in Onojo City for some reason such as entering school, starting work and taking procedures of moving-in after Dec. 1<sup>st</sup>, you can join. Please tell at the reception.

\*If you are a subject person and don't have an admission ticket, please contact us.

	1 <sup>st</sup> part	2 <sup>nd</sup> part
<b>Subject School Area</b>	◇Ori Junior High School ◇Hirano Junior High School	◇Ono Junior High School ◇Ono Higashi Junior High School ◇Goryo Junior High School
<b>Reception</b>	9:30am - 10:30am	12:00pm - 1:00pm
<b>Ceremony</b>	10:30am - 11:10am	1:00pm - 1:40pm
<b>Venue</b>	Main Hall at Madokapia *Due to the situation of novel coronavirus, if participants exceed the capacity limit of the hall, we will guide you to Multipurpose Hall.	

For application or further information, please contact Local Culture and Industry Promotion Section  
Tel: 092-580-1876 Fax: 092-573-7791  
E-mail: [sangyo@city.onojo.fukuoka.jp](mailto:sangyo@city.onojo.fukuoka.jp)





# Joe's NEWS

Selected information from the city magazine "ONOJO"

Nov. 15th, 2020 issue (No.8)

## Recruiting Participants of Madoka Sports

### Madoka Sports Body Conditioning Class

"Let's improve your posture and body movement!"

- **Dates and Time** Wednesdays, Jan. 6<sup>th</sup>, 2021 - Mar. 10<sup>th</sup>, 2021 (10 times)
- **Time** 10:00am-12:00pm
- **Venue** Minami Community Center, Multipurpose room
- **Limit** 25 people ● **Fee** 2,500 yen (including insurance fee)

### Madoka Sports Shape-up Exercise Class "Let's tone up your body!"

- **Date** Thursdays, Jan. 7<sup>th</sup>, 2021 - Mar. 18<sup>th</sup>, 2021 (10 times)
- **Time** 1:00pm - 3:00pm \*No class on Feb. 11<sup>th</sup>, 2021
- **Venue** Chuo Community Center, Multipurpose room
- **Limit** 25 people ● **Fee** 2,500 yen (including insurance fee)

### Madoka Sports Combustion Aerobics Class

"Let's take aerobic exercise with music!"

- **Dates** Fridays, Jan. 8<sup>th</sup>, 2021 - Mar. 19<sup>th</sup>, 2021 (10 times)
- **Time** 1:00pm-3:00pm \*No class on Jan. 29<sup>th</sup>, 2021
- **Venue** Higashi Community Center, Multipurpose room
- **Limit** 25 people ● **Fee** 2,500 yen (including insurance fee)

- **Subject Person** Onojo City residents or who are working in Onojo City
- **Application** Write the name of class, postal code, address, name (furigana), male or female, age, phone number, on a post card and send it to the address below. \*A post card should be sent per applicant
- **Application dead line** Must be received before Mon, Nov. 30<sup>th</sup>  
\*Drawing will be held if the applicants exceed the limit.



### [Drawing]

- **Date and Time** Wed, Dec. 2<sup>nd</sup> from 1:30pm
- **Venue** Madoka Park General Gymnasium, Kenshushitsu (Training Room)  
\*Drawing will not be open to the public to prevent novel coronavirus infection.  
\*Notification will be sent to only elected applicants after the draw.  
\*Advanced Payment. Please check the notification for details.

### [For information and application] (Japanese-speaking staff Only)

Onojo Athletic Association (大野城市体育協会) 「Name of Class (教室)」  
c/o Madoka Park Sogo Taiikukan  
618-12 Otogana, Onojo City, 816-0902

Phone Number: 092-503-0021

## Let's go to "Star-dome-madoka"! Let's see topography of the moon!

- **Date and Time** Sat, Nov. 28<sup>th</sup>

- **Time** 7:00pm - 8:50pm

- **Contents** ◇ Observing the moon with a telescope  
◇ Observing the stars in autumn with a telescope



## Let's find Cassiopeia from the Pole Star!

- **Date** Sat, Dec. 5<sup>th</sup>

- **Time** 7:00pm - 8:50pm

- **Contents** ◇ Observing stars in autumn and winter with a telescope



- **Venue** Kita Community Center

- **Fee** Free

\*Junior High School students and younger must be accompanied by their guardians.

\*In the case of rain or cloudiness, a story telling will be held in a room.

\*No registration in advance necessary.

\*For application, please call or e-mail us.

## Aerosol Cans and Spray Cans are "Other Non-Burnable Garbage"

Aerosol cans and spray cans are "Other Non-burnable garbage". When you dispose of aerosol cans and spray cans, please use the contents completely and dispose as "Other Non-burnable garbage". Aerosol cans that contain remaining gas may cause explosion or fire in garbage trucks.

### CAUTION Do not pierce aerosol cans!

- ◇ **Spray Can:** Some kinds of them have a function to eject the content. Please contact us if you can't use the contents completely.



- ◇ **Butane Gas Cartridge:** Please call Kasuga Onojo Recycle Plaza at 092-596-7066 first and bring them to the Plaza (6-2 Kasugakoen Kasuga city) if you can't use the contents completely.

For application or further information, please contact Local Culture and Industry Promotion Section  
Tel: 092-580-1876 Fax: 092-573-7791  
E-mail: [sangyo@city.onojo.fukuoka.jp](mailto:sangyo@city.onojo.fukuoka.jp)







# Joe's NEWS

Selected information from the city magazine "ONOJO"

Nov. 15th, 2020 issue (No.9)

## Consultation Service for Novel Coronavirus Infection

### ● Consultation for Visiting Medical Institution

'Chikushi Health and Welfare Environment Office (Returnees and potential contacts call center)' provides consultation service for the persons who may have been infected by novel coronavirus. If you have symptoms listed below, please contact 'Chikushi Health and Welfare Environment Office' immediately before visiting a medical institution. \*When you visit the clinic, please wear a mask and avoid using public transportation.

◇ Persons who have severe symptoms such as breathing difficulty, severely tired, high fever, etc.

◇ Persons whose symptoms are prone to easily get severe such as seniors and those who have chronic diseases and who have symptoms of colds such as fever, cough, etc.

◇ Persons who have symptoms of colds and been having symptoms of colds such as fever, cough, etc. (As to persons who have been having these symptoms for 4 days or more, consultation is absolutely required.)

[As to consultation in foreign language, please contact the number below.](#)

**Multilingual Call Center Fukuoka Asian Medical Center** TEL: 092-286-9595

**TRAVEL SUPPORT Kyushu/Yamaguchi CALL CENTER** TEL: 092-687-6639

### Chikushi Health and Welfare Environment Office

TEL: 092-707-0524 \*Weekday only 8:30am - 5:00pm

### Fukuoka Prefectural Public Health Center

TEL: 092-643-3288 \*Night time, Saturday, Sunday and National Holiday

### ● Consultation for Other General Things

**The dedicated number for general consultation** (24 hour-service)

TEL: 092-643-3288 FAX: 092-643-3697

**Telephone Consultation Service by Ministry of Health, Labour and Welfare**

TEL: 0120-565653 (Toll-free) \*9:00am - 9:00pm

## We ask for your cooperation to prevent the spread of novel coronavirus infection

Please avoid the risk of infection and act to protect health and lives of your family and people around you.

● Avoid the "Three Cs" (Closed spaces, Crowded places, Close-contact settings) and do not talk loudly.

● Practice basic preventive measures such as wear a mask, follow "cough etiquette" and wash and disinfect your hands well and frequently.

● Keep your distance from others.

● Take preventive measures thoroughly at gatherings.

● Refrain from going to places where they lack preventive measures.

● Register for the app, COCOA.

● Ventilate spaces regularly.

● Check your body temperature every morning.



## About Cancellation of Events and Measures against Novel Coronavirus

\*Please wear a mask and check your body temperature when you join events.

\*There are events which are cancelled or postponed and facilities which limit the usage to prevent novel coronavirus infection. For further information related to novel coronavirus infection, please refer to the HP of Onojo City or contact us.

### ● HP of Onojo City

About Novel Coronavirus

<http://www.city.onojo.fukuoka.jp/s022/010/20200206093749.html>

## Information on Opening Hours

Nov. 16<sup>th</sup> Onojo Cocoro-no-furusato-kan City Museum will be CLOSED

Nov. 18<sup>th</sup> Madokapia will be CLOSED

Nov. 24<sup>th</sup> Onojo Cocoro-no-furusato-kan City Museum will be CLOSED

Nov. 28<sup>th</sup> Citizen Service Section will be open from 9:30am to 12:30pm

Nov. 30<sup>th</sup> Onojo Cocoro-no-furusato-kan City Museum will be CLOSED

Joe'BOX



Don't feel alone.

Please email us at

[sangyo@city.onojo.fukuoka.jp](mailto:sangyo@city.onojo.fukuoka.jp)

[if you have any problems living in Onojo City.](#)

For application or further information, please contact Local Culture and Industry Promotion Section

Tel: 092-580-1876 Fax: 092-573-7791

E-mail: [sangyo@city.onojo.fukuoka.jp](mailto:sangyo@city.onojo.fukuoka.jp)

