

# Joe's NEWS

Selected information from the city magazine "ONOJO"

May 1st, 2021 issue (No.1)

## Novel Coronavirus (COVID-19) Vaccination

### Vaccination in Care Homes for the Elderly

The elderly using care homes will be vaccinated first, followed by people who work in those facilities.

●Vaccination Start Date: Mon, May 3<sup>rd</sup>



### Group Vaccination

Vaccination for health-care workers will be conducted by the end of May. Therefore, for the time being, vaccination for health-care workers and elderly residents are conducted in parallel.

●Vaccination Start Date: Tue, May 18<sup>th</sup>

●Vaccination venue:◇Sukoyaka Koryu Plaza ◇Minami Community Center  
◇Kita Community Center

\*The vaccination schedule might be changed in the following situations.

- ◇Infection of COVID-19 is spreading.
- ◇Vaccination for health-care workers is delayed.
- ◇Vaccines are not rolled out as scheduled.
- ◇Vaccination venue is used for evacuation center in a disaster.

### Vaccination ticket will be sent to subject person on or after Sat, April 24<sup>th</sup>.

#### ●Subject Person:

Persons aged 65 or over (as of March 31<sup>st</sup>, 2022) who are registered as residents in Onojo City  
(Persons born on April 1st, 1957 or before)

#### ●How to Make a Reservation: by phone or online

\*For further information, please check the documents sent with the vaccination ticket or the HP of Onojo City, or contact us.

\*Vaccines are offered in series and we will secure vaccines for all elderly residents registered in Onojo City by the end of June.

(Continued on the right column)

## Novel Coronavirus (COVID-19) Vaccination

Category of Subject Person	Vaccination Start Date	Vaccination Venue
<ul style="list-style-type: none"> <li>• The elderly using care homes</li> <li>• People work in care homes</li> </ul>	Mon, May 3 <sup>rd</sup>	each facility
Elderly Residents aged 65 or over	Tue, May 18 <sup>th</sup>	each of the vaccination venues

\*Vaccination is scheduled in the middle of July or after at the designated vaccination venues for persons aged 16-64 with pre-existing diseases.

\*This notification is based on the information as of Mon, April 19<sup>th</sup>. Therefore, it might be changed in the future.

\*For further information, please check the HP of Onojo City or contact us.

## About Cancellation of Events and Measures against Novel Coronavirus

\*Please practice preventive measures such as wearing a mask, checking your body temperature when you join events.

\*There are events which are cancelled or postponed to prevent novel coronavirus infection. For further information related to novel coronavirus infection, please refer to the HP of Onojo City or contact us.

#### ●HP of Onojo City

##### About Novel Coronavirus

<http://www.city.onojo.fukuoka.jp/s022/010/20200206093749.html>

##### Cancellation or Postponement of Events

<http://www.city.onojo.fukuoka.jp/d001/20200221121745.html>

##### Facility Opening Hours

<http://www.city.onojo.fukuoka.jp/d001/0228.html>

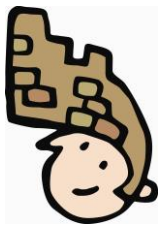
Joe'BOX



Don't feel alone.  
Please email us at  
[sangyo@city.onojo.fukuoka.jp](mailto:sangyo@city.onojo.fukuoka.jp)  
if you have any problems living in Onojo City.

For application or further information, please contact Local Culture and Industry Promotion Section  
Tel: 092-580-1876 Fax: 092-573-7791  
E-mail: [sangyo@city.onojo.fukuoka.jp](mailto:sangyo@city.onojo.fukuoka.jp)





# Joe's NEWS

Selected information from the city magazine "ONOJO"

May 1st, 2021 issue (No.2)

## Do you know your physical strength?

Do you want to find the right exercise for you? Check your physical strength with the Health Performance Measurement in the presence of a doctor and a health exercise instructor and advise the right exercise for you.

### ●Subject Person

Onojo residents or who are working in Onojo City (Aged 40 and above)

Measuring Date	Venue
◇ Thu, May 20 <sup>th</sup>	Sukoyaka Koryu Plaza
◇ Thu, Jul. 8 <sup>th</sup>	

### ●Contents

- ◇ Electrocardiogram ◇ Medical interview
- ◇ Body composition measurement
- ◇ Bicycle ergometer (endurance, optimal exercise intensity)
- ◇ Various physical fitness measurement  
(balance, flexibility, grip strength, locomotive syndrome risk test, etc.)



●Limit 20 people / each day (First- come first-served basis)

●Time Required approximately 1.5hrs

●Fee 1,800 yen

### ●Necessary Item

Copy of medical check-up results or equivalent health check-up results issued within a year, Indoor sports shoes, Drinks, Sports clothes, Towel, etc.

\*In case that you are under any medical treatment, you need an authorization from your doctor.

### ●How to Apply

Call (Phone: 092-501-2322) or visit Health Promotion Office at Sukoyaka Koryu Plaza during opening hours: Mon and Wed-Sat except national holidays, 9:00am-6:00pm (Japanese-speaking staff Only) or contact us.

## Clean City Onojo

Onojo City promotes the activity, Clean City Onojo. This is a beautification project held in spring and autumn in each self-governing community. Activities such as cleaning road, pulling up weeds at parks, etc. are taking place. Please join and keep your community clean.

## Child Rearing Class for Expecting Couples

Are you expecting a baby? Learn more about pregnancy, child birth and child rearing with other expecting couples.

### ●Subject person

Expecting women and partners who are living in Onojo City

### ●Date and Time

Sat, Jul. 3<sup>rd</sup> / 1:30pm - 4:00pm

●Venue Onojo Cocoro-no-furusato-kan City Museum, Lecture Room 【M2<sup>nd</sup> floor】



### ●Details

- ◆ Simulated experience of pregnant woman
- ◆ Maternity exercise for couples, etc.

### ●Limit 10 couples

\*An expecting woman who has no birth experience and whose due date is coming soon will be given priority in case the applicants exceed the limit.

●Charge 200 yen / couple

### ●How to Apply

Please send e-mail or fax to us with the followings written:

- ◆ The name of this class ◆ Names of the expecting woman and partner
- ◆ Age ◆ Birth date ◆ Postal code and Address
- ◆ Phone number ◆ Due date ◆ First or Second (or more) birth

●Deadline Must be received before Mon, May 31<sup>st</sup>

## Night time and Holiday Doctors (Monthly)

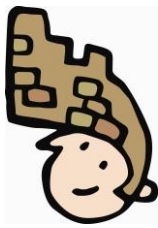
We provide the information on Night time and Holiday Doctors (Monthly) in English on the website of Onojo City. Please check the following site and make use of it in the case of emergency at night and on holidays.

URL <http://www.city.onojo.fukuoka.jp/s022/010/020/010/020/050/93875.html>

\*Please visit a medical institution available at night time or on holidays only in case of emergency. \*As the information is subject to change, please confirm availability beforehand with the medical institution you would like to visit.

For application or further information, please contact Local Culture and Industry Promotion Section  
Tel: 092-580-1876 Fax: 092-573-7791  
E-mail: [sangyo@city.onojo.fukuoka.jp](mailto:sangyo@city.onojo.fukuoka.jp)





# Joe's NEWS

Selected information from the city magazine "ONOJO"

May 1st, 2021 issue (No.3)

## Onojo General Gymnasium Sports Class

Each lesson targets beginners and you can take exercise at your own pace. You can join any time.

### ●Venue

Madoka Park General Gymnasium

### ●Participation Fee

300yen per time (including insurance)

\*Please pay at the reception on the day, must be completed by 10mins before a lesson

### ●Necessary Items

casual outfit for exercising, indoor shoes, drink, towel, etc.

### ●How to apply

Call (Phone: 092-503-0021) (Japanese-speaking staff Only) or contact us.

\*Please tell your name, age, phone number, the name of lesson and the first day you will join.

Lesson	Date, Time	Limit (First-come first-served basis)	Contents
Take It Easy	May 21 <sup>st</sup> - Jul. 16 <sup>th</sup> Every Fri. 10:00am - 12:00pm	15	Exercise with a step ladder, Muscle strengthening exercise, Stretch
Orientation for Training Room Users	May 18 <sup>th</sup> - Jul. 20 <sup>th</sup> 3 <sup>rd</sup> Tuesdays 1:30pm - 3:00pm	2	How to use training machines

\*Each class includes preparation and clean-up time.

\*There is a case that class will be cancelled for certain reasons.

\*You can join in mid-tem.

## Dog Registration and Vaccination against Rabies

Dogs aged 91 days and older must be registered with Onojo City and vaccinated against rabies once a year. It is mandated by the Rabies Prevention Act.



## Please do not forget to pay

### Payment of Automobile Tax and Light Vehicle Tax is until May 31<sup>st</sup>

Automobile tax and light vehicle tax are decided based on the categories such as type, usage and engine displacement and imposed on car owners as of April 1<sup>st</sup> and the notification of payment will be sent in the beginning of May.

How to pay is as follows.

### ●軽自動車税, Light Vehicle Tax (Category Base)

- ◇at financial institutions
- ◇at designated convenience stores
- ◇through cash apps such as Pay Pay, Line Pay and Pay B



### ●自動車税, Automobile Tax (Category Base)

- ◇at financial institutions
- ◇at designated convenience stores
- ◇at counters of Fukuoka prefectural tax offices
- ◇with Credit Card
- ◇through cash apps such as Pay Pay and Line Pay

### ●Inquiries

◇Light Vehicle Tax (Category Base)

Onojo City, Taxation Section

Phone: 092-580-1827

◇Automobile Tax (Category Base)

Chikushi Tax Office, Automobile Tax Section

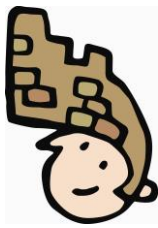
Phone: 092-513-5576

For application or further information, please contact Local Culture and Industry Promotion Section

Tel: 092-580-1876 Fax: 092-573-7791

E-mail: [sangyo@city.onojo.fukuoka.jp](mailto:sangyo@city.onojo.fukuoka.jp)





# Joe's NEWS

Selected information from the city magazine "ONOJO"

May 1st, 2021 issue (No.4)

## Onojo Cocoro-no-furusato-kan City Museum Information - Japanese History Experience held in May -

### Cocoful Workshop

Date	Contents
Sat, May 1 <sup>st</sup> / Sun, May 2 <sup>nd</sup> Sat, May 8 <sup>th</sup> / Sun, May 9 <sup>th</sup> Sat, May 15 <sup>th</sup> / Sun, May 16 <sup>th</sup>	Let's Make "Kafu" (ancient coin) bookmark! (Take a pencil rubbing from <i>Kafu</i> shaped object, cut the shape and paste on a piece of paper.)
Sat, May 22 <sup>nd</sup> / Sun, May 23 <sup>rd</sup> Sat, May 29 <sup>th</sup> / Sun, May 30 <sup>th</sup>	Let's try "Origami" (paper folding)!

● **Subject person** Whoever wants to join.  
\*Participants must be accompanied by one of their guardians.

● **Time** 10:00am - 4:00pm (Reception is closed at 3:30pm.)

● **Venue** Kids History Experience Room  
【1<sup>st</sup> Floor, Onojo Cocoro-no-furusato-kan City Museum】

● **Fee** Free \*It will end when materials run out.



### Cocoful Experience Workshop

Let's make a "Mizuhiki" accessory such as earrings and a pin!

*Mizuhiki* is a decorative cord which winds easily. Red and White *Mizuhiki* is a traditional one. It is originally used for wrapping gifts. Recently the use of *Mizuhiki* has spread beyond its original purpose and it is used for accessories, etc.

● **Subject person** 5<sup>th</sup> grade elementary school students and older

● **Date** ①Sat, May 22<sup>nd</sup> ②Sun, May 23<sup>rd</sup> ● **Time** 1:00pm - 3:00pm

● **Venue** 【Onojo Cocoro-no-furusato-kan City Museum】  
①Lobby (Joe Hall) 【1<sup>st</sup> floor】 ②Lecture Room 【M2<sup>nd</sup> floor】

● **Limit** 10 people / each day  
\*If applications exceed capacity, a drawing will be held.

● **Fee** 500yen

● **Application Period** Sat, May 1<sup>st</sup> - Mon, May 10<sup>th</sup>

● **How to apply** Send e-mail or fax to us with the name of event "May's Cocoful Experience Workshop", participant's name, age, grade, telephone number, preferred date written.

\*1 application for 1 participant

\*For application or further information, please contact us.



## Onojo Cocoro-no-furusato-kan City Museum

Visitors are able to learn the history of Onojo City easily and widely through exhibitions.

● **Closed** Every Monday  
\*If Monday falls on a public holiday, the museum is closed on the following weekday.

● **Hours** 9:00am - 7:00pm

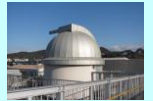
● **Admission** Permanent Exhibition: Free  
\*Special Exhibition: Charged

● **Notes** Please be sure to wear a mask when you visit the museum. As for children under 3 years old and people who may find it difficult to wear a mask, please let a staff member of the museum know.

## Let's go to "Star-dome-madoka"! Let's watch the stars together!

● **Date and Time** Sat, May 22<sup>nd</sup> 7:00pm - 8:50pm

● **Contents** ◇ Observing the stars and the moon with a telescope



## Seasonal Event

### Let's watch Total Lunar Eclipse together!

● **Date and Time** Wed, May 26<sup>th</sup> 7:30pm - 9:50pm

● **Contents** ◇ Observing the moon with a telescope  
◇ Taking photos of the moon



● **Venue** Kita Community Center, "Star-dome-madoka"

● **Fee** Free

\*Junior High School students and younger must be accompanied by guardians.

\*In the case of rain or cloudiness, a story telling will be held in a room.

\*No registration in advance necessary.

For application or further information, please contact Local Culture and Industry Promotion Section

Tel: 092-580-1876 Fax: 092-573-7791

E-mail: [sangyo@city.onojo.fukuoka.jp](mailto:sangyo@city.onojo.fukuoka.jp)





# Joe's NEWS

Selected information from the city magazine "ONOJO"

May 1st, 2021 issue (No.5)

## Application Deadline of Support Measures for Business Operators Affected by Novel Coronavirus Is Approaching

Onojo City is accepting applications to support business operators affected by novel coronavirus.

### ◇大野城市雇用調整推進奨励金

Onojo City Employment Adjustment Promotion Subsidy

●Application Deadline Mon, May 31<sup>st</sup>

●How to Apply by post

\*When you send the application form by post, the application form postmarked on the deadline date will be deemed valid.

\*There are conditions and necessary documents to receive the subsidy. For further information, please contact us.

\*Application deadline is approaching. Please apply as soon as possible if you are eligible.

## Consultation Service for Novel Coronavirus Infection

### ●Consultation for Visiting Medical Institution

'Chikushi Health and Welfare Environment Office (Consultation Call Center)' provides consultation service for novel coronavirus infection. If it is suspected that you might have been infected with the virus, please contact 'Chikushi Health and Welfare Environment Office' immediately before visiting a medical institution.

[As to consultation in foreign language, please contact the number below.](#)

**Multilingual Call Center Fukuoka Asian Medical Center** TEL: 092-286-9595

### Chikushi Health and Welfare Environment Office

TEL: 092-707-0524 \*Weekday only 8:30am - 5:00pm

TEL: 092-643-3288 \*Night time, Weekends and National Holidays

### ●Consultation for Other General Things

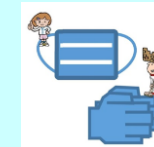
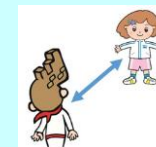
**Telephone Consultation Service by Ministry of Health, Labour and Welfare**

TEL: 0120-565653 (Toll-free) \*9:00am - 9:00pm

## We ask for your cooperation to prevent the spread of novel coronavirus infection

Each of us needs to have a responsibility for our actions and practice preventive measures thoroughly to protect our health and lives.

- ◇Wash and disinfect your hands well and frequently
- ◇Follow "cough etiquette", Wear a mask
- ◇Ventilate spaces regularly
- ◇Keep your distance from others
- ◇Avoid the "Three Cs" (Closed spaces, Crowded places, Close-contact settings)
- ◇Check your body temperature every morning. If you have symptoms like fever, cough, and or cold, please stay at home and take a rest.
- ◇Take preventive measures thoroughly at gatherings
- ◇Refrain from going to places where they lack preventive measures
- ◇Register for the app, COCOA



## Information on Opening Hours

May 6<sup>th</sup> Madokapia will be CLOSED

May 8<sup>th</sup> Citizen Service Section will be open from 9:30am to 12:30pm

May 10<sup>th</sup> Onojo Cocoro-no-furusato-kan City Museum will be CLOSED

Joe'BOX



Don't feel alone.

Please email us at

[sangyo@city.onojo.fukuoka.jp](mailto:sangyo@city.onojo.fukuoka.jp)

[if you have any problems living in Onojo City.](#)

For application or further information, please contact Local Culture and Industry Promotion Section

Tel: 092-580-1876 Fax: 092-573-7791

E-mail: [sangyo@city.onojo.fukuoka.jp](mailto:sangyo@city.onojo.fukuoka.jp)

