

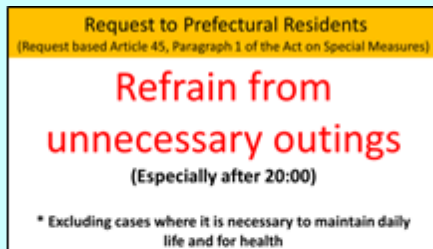
# Joe's NEWS

Selected information from the city magazine "ONOJO"

Feb. 15th, 2021 issue (No.1)

## Novel Coronavirus Infection Under a State of Emergency

A state of emergency has been issued to Fukuoka Prefecture until Sun, February 7<sup>th</sup>. Novel coronavirus cases have been confirmed for consecutive days in Onojo City as well, and we are in a really serious situation. It is crucial for each of us to practice thorough preventive measures to prevent the spread of novel coronavirus. Each of us needs to have a responsibility for our actions and practice preventive measures thoroughly to protect our health and lives. We ask for the understanding and cooperation of all Onojo residents to get over this crisis situation.



## Request to restaurants

(Request based Article 24, Paragraph 9 of the Act on Special Measures)



**Shortened business hours (5:00 to 20:00)**

**\*Alcoholic beverages to be served from 11:00 to 19:00**

### ●Refrain from unnecessary outings

We ask that you refrain from unnecessary outings, both day or night. Particularly, going out after 20:00.

\*This does not apply to going to the hospital, shopping for food, medical supplies and daily necessities, going to work, exercising, taking a walk, or any other activities that are necessary to maintain your life and health.

### ●Practice basic infection prevention measures thoroughly

Please continue to perform standard infection prevention practices such as masks, hand washing, disinfecting your hands with alcohol, physical distance, and avoiding the three Cs.

(Continued on the right column)

## Novel Coronavirus Infection Under a State of Emergency

(Continued from the left column)



- ・外出控え Refrain from unnecessary outings
- ・密集回避 Avoid closed spaces
- ・密接回避 Avoid close-contact settings
- ・密閉回避 Avoid crowded places
- ・換気 Ventilation
- ・咳エチケット、マスク着用 Follow "cough etiquette", Wear masks
- ・手洗い Wash hands well

For the latest information, please check the websites of Onojo City, Fukuoka Prefecture and Ministry of Health, Labour and Welfare.

### ●Onojo City

<http://www.city.onojo.fukuoka.jp/s022/010/20200206093749.html>

### ●Fukuoka Prefecture

<https://www.pref.fukuoka.lg.jp/contents/corona-gaikokujuin4.html>

### ●Ministry of Health, Labour and Welfare

[https://www.mhlw.go.jp/stf/seisakunitsuite/bunya/0000164708\\_00079.html](https://www.mhlw.go.jp/stf/seisakunitsuite/bunya/0000164708_00079.html)

Joe'BOX



**Don't feel alone.**

**Please email us at**

**[sangyo@city.onojo.fukuoka.jp](mailto:sangyo@city.onojo.fukuoka.jp)**

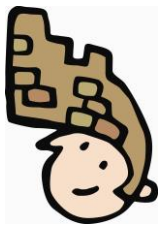
**if you have any problems living in Onojo City.**

**For application or further information, please contact  
Local Culture and Industry Promotion Section**

**Tel: 092-580-1876 Fax: 092-573-7791**

**E-mail: [sangyo@city.onojo.fukuoka.jp](mailto:sangyo@city.onojo.fukuoka.jp)**





# Joe's NEWS

Selected information from the city magazine "ONOJO"

Feb. 15th, 2021 issue (No.2)

## Declaration of Final Tax Return at Onojo City Office

If you are aged 70 and older (as of Jan. 1<sup>st</sup>, 2021) living in Onojo City and your income is only pension, only salary or both of pension and salary, you can submit the documents at Onojo City Office.

\*Subject person and acceptance period are different from previous years to prevent the spread of novel coronavirus infection.

### ●Acceptance Period

Acceptance Period	Area	Administrative Area where Subject Person Lives
Tue, Feb. 16 <sup>th</sup> - Thu, Feb. 18 <sup>th</sup>	Kita (North)	◇Kamitsutsui ◇Shimotsutsui◇Yamada ◇Zasshonokuma-machi ◇Sakae-machi ◇Nakashima◇Hatazume
	Higashi (East)	◇Kamabuta◇Inokuchi ◇Naka◇Otogana ◇Otoganadai ◇Otoganahigashi◇Oike
Fri, Feb. 19 <sup>th</sup> - Mon, Feb. 22 <sup>nd</sup>	Chuo (Central)	◇Kamiori◇Shimoori ◇Higashiori ◇Shimoori-danchi ◇Shirakibaru ◇Kawarada
Wed, Feb. 24 <sup>th</sup> - Fri, Feb. 26 <sup>th</sup>	Minami (South)	◇Ushikubi◇Wakakusa ◇Hiranodai◇Tsukinoura ◇Minamigaoka1 ◇Minamigaoka2 ◇Tsutsujigaoka

●Time 9:00 am – 3:30 pm

●Venue Onojo City Hall, New building 4F (Room #427)

For further information, please contact us.

## Disaster Prevention Session for Foreign Residents

Onojo City with the cooperation of the Onojo International Exchange Association will hold disaster prevention session for foreign residents. Through the session, we will provide information about evacuation sites and preparation in natural disasters. We never know when disasters will occur, so it is crucial to prepare for them with proper knowledge. Why don't you join this session and learn about disasters in Japan and how to prepare for them?

●**Subject Person** Foreign residents living, studying or working in Onojo City

●**Date and Time** Sat. Mar. 6<sup>th</sup> 11:00am - 12:00pm

●**Venue** Chuo Community Center, 2nd Floor, Training Room 1·2

●**Content** You can learn about evacuation sites, disaster preparedness and so on in simple Japanese and English with video and hazard maps (English, Chinese and Korean versions)

●**Fee** Free

●**How to Apply** Call or Send e-mail us with your name, address, mobile phone number, the version of the hazard map.

◇**Phone:** 092-580-1876

◇**E-mail:** [sangyo@city.onojo.fukuoka.jp](mailto:sangyo@city.onojo.fukuoka.jp)

\*Please write "Application for Disaster Prevention Session" in a subject when you send e-mail.

\*You can call or text us in English.

\*First-come first-served basis

\*If the applications exceed capacity, you might not participate in the session.

●**Application Deadline** Mon, Mar. 1<sup>st</sup>

For further information, please contact us.



For application or further information, please contact Local Culture and Industry Promotion Section

Tel: 092-580-1876 Fax: 092-573-7791

E-mail: [sangyo@city.onojo.fukuoka.jp](mailto:sangyo@city.onojo.fukuoka.jp)





# Joe's NEWS

Selected information from the city magazine "ONOJO"

Feb. 15th, 2021 issue (No.3)

## Recommendation to make a payment such as payment of a municipal tax through an account transfer

What's an Account Transfer? It is one of the methods to make a payment such as payment of a municipal tax. If you go through the procedure at the financial institutions which offer the service, fees are transferred to recipients automatically from the account you designated by each payment period.

### Merits of Account Transfer

#### Convenient when making a payment

- ◆ You don't have to take the trouble to visit a municipal office or a financial institution for making a payment during busy weekdays.
- ◆ Once you go through the procedure, the service is continued automatically next year and later.

#### Safe and Secure

- ◆ You don't have to go out with cash.
- ◆ You can avoid forgetting to make a payment carelessly since the fee is certainly transferred within a payment period.



### How to Apply

Please apply at a financial institution with ◇Pass Book◇Your Personal Seal which you used for opening your account◇Payment Notification◇Request Form for Account Transfer\* (You can apply at a section in charge of each fee.)

\*A Request Form for Account Transfer is attached to a payment notification. Or you can obtain it at financial institutions in Onojo City and Onojo City Office.

## Application for Fukuoka Prefecture Housing Project

Fukuoka Prefecture Housing Project rooms are available. If you wish to apply, please receive the application handbook at local government offices.

### Distribution and Application Period

Fri, Feb. 26<sup>th</sup> - Mon, Mar. 8<sup>th</sup>

\*Please check the application form (available only in Japanese) for further information about the housing.

## To reduce troubles related to dogs and cats in your community

Odors from animal, animal waste or noises may lead to difficulties between neighbors. Please consider your neighbors when you have a pet. If you are not sure about manners and have questions on having a pet, please contact us.

### Dog Registration and Vaccination against Rabies

Dogs aged 91 days and older must be registered to Onojo City within 30 days and vaccinated against rabies once a year. It is mandated by the Rabies Prevention Act.

- ◆ Dog License Label Issuance Charge: 3,000 yen



- ◆ Registration is required only once in the lifetime of the dog.

\*When moving away from Onojo, you are required to go through dog registration again at the municipal office in your new area. (free of charge)

- ◆ Rabies vaccination must be received once a year.

\*Available at veterinary hospitals.



## Let's make a craft with acorns!

- **Subject person** Elementary school students or older

- **Date and Time** Sat, Mar. 13<sup>th</sup> 10:00am -12:00pm

- **Venue** Onojo Midori-no-trust Kyokai Jimusho (Onojo Green Trust Foundation Office) in Furukawa Park, Multipurpose Room (Mikasagawa, Onojo)

- **Contents** Craft making with acorns

- **Items to bring** ◇a bag to put the craft in

- **Limit** 10 people (First-come first-served basis)

- **How to apply** Please call us

- **Application Period** Mon, Mar. 1<sup>st</sup> - Fri, Mar. 5<sup>th</sup>

Reception Time: 8:30am - 5:00pm



For application or further information, please contact Local Culture and Industry Promotion Section

Tel: 092-580-1876 Fax: 092-573-7791

E-mail: sangyo@city.onojo.fukuoka.jp





# Joe's NEWS

Selected information from the city magazine "ONOJO"

Feb. 15th, 2021 issue (No.4)

## Baby Station

In Onojo city, the facilities where you can change your baby's diapers and/or breast-feed are registered as "Baby Station" and these facilities show the Baby Station logo. Please make use of these facilities when going out with your baby. There are also baby stations in the neighboring cities and towns.

Example of the facilities you can breast-feed and change diapers

Onojo City Hall, Madokapia,  
Onojo Cocoro-no-furusato-kan City Museum,  
Sukoyaka Koryu Plaza, Public Halls,  
Assembly Halls (Kamiori, Shirakibaru, Mizuho-machi),  
AEON Onojo, Family Koryu Center



Example of the facilities you can change diapers

Community Centers, Madoka Park(General Gymnasium),  
Mikaneike Park, Hinouraike Park,  
Onojo City Sogo Fukushi Center(General Welfare Center), JR Onojo Station

\*As of Feb. 1<sup>st</sup>, 2021

## Akachan (baby) Hiroba

Come join us and have a relaxing time with other mothers!

●**Subject Person** 3 months -12 months old child and mother

\*It is not acceptable to bring siblings.

●**Contents** ◇Talk by health nurse, nursery teacher, midwife and nutritionist

◇Parent-child play ◇Reading stories ◇Parenting consultation



Subject Person	Date and time	Venue
Those who live in South / East Community Area	Fri, Mar. 5 <sup>th</sup> 10:30am-12:00pm	Reiwa Kodomo Joho Center(Reiwa Children Information Center), Kosodate-oen (support for child raising) Floor (Sukoyaka Koryu Plaza 3F)
Those who live in North Community Area	Fri, Mar. 12 <sup>th</sup> 10:30am-12:00pm	
Those who live in Central Community Area	Fri, Mar. 26 <sup>th</sup> 10:30am-12:00pm	

(Reception: from 10:00am - ) \*Please attend in the community area you live.

●**Fee** Free

●**Items to bring** swaddle blanket or bath towel

\*No registration in advance necessary \*Limited Parking

## Nobinobi Hiroba

Why don't you experience parent-child play with our day-care center staff?

●**Subject Person** Children 1 - 2 years and their guardians living in Onojo City

\*Please consult as to participation of siblings.

●**Date and Time**

Date	Time	Venue
Wed, Mar. 10 <sup>th</sup>	10:15am-11:30am (Reception: 10:00am-)	Reiwa Kodomo Joho Center(Reiwa Children Information Center), Kosodate-oen (support for child raising) Floor (Sukoyaka Koryu Plaza 3F)
Wed, Mar. 17 <sup>th</sup>		
Thu, Mar. 25 <sup>th</sup>		

\*Multiple applications are not acceptable.

●**Cost** free

●**Limit** 15 groups / each day (First-come first-served basis)

●**Application** Call us

●**Application Period** from Thu, Feb. 18<sup>th</sup> to Wed, Feb. 24<sup>th</sup> 9:00am - 5:00pm



## Place for the youth, ユープレ (Yu-pure), opened on Mon, Feb. 1<sup>st</sup>, 2021

This is the place for young people from junior high school students to people aged up to 29. Those people can freely drop by the place and spend their time. The place is nicknamed ユープレ (Yu-pure), an abbreviation of Youth Place.

●**Location** 2-2-2 Tsutsui, Onojo City (former Shimotsutsui Public Hall)

●**Hours** ◇Weekdays 1:00pm - 9:00pm

◇Holidays\* 10:00am - 6:00pm

\*Saturdays, Sundays, national holidays, summer holidays, etc.

●**Closed** Year-end and New Year Holidays (Dec. 29<sup>th</sup> - Jan. 3<sup>rd</sup>)

\*You can use the place for free of charge.

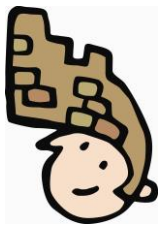
\*You need to register first to use this place. If you are eligible and interested in using, please contact us.

For application or further information, please contact Local Culture and Industry Promotion Section

Tel: 092-580-1876 Fax: 092-573-7791

E-mail: sangyo@city.onojo.fukuoka.jp





# Joe's NEWS

Selected information from the city magazine "ONOJO"

Feb. 15th, 2021 issue (No.5)

## Cocoful News

**Why don't you visit Onojo Cocoro-no-furusato-kan City Museum?**

**Wall Climbing Experience for Preschoolers at Onojo Cocoro-no-furusato-kan City Museum**

Climbing wall is set in Onojo Cocoro-no-furusato-kan City Museum to experience the height of Hyakken Stone Wall Ruins. Wall climbing experience is normally offered to junior high school students or older. In this opportunity, why don't you try wall climbing?

● **Subject person** Preschoolers who were born between Apr. 2<sup>nd</sup>, 2014 and Apr. 1<sup>st</sup>, 2016

\*Participants must be accompanied by parents or guardians aged 20 or older.

● **Date** Sat, Mar. 6<sup>th</sup> and Sat, Mar. 13<sup>th</sup>

● **Time** ◇ Group 1 9:25am - 10:00am  
◇ Group 2 10:10am - 10:45am  
◇ Group 3 10:55am - 11:30am  
◇ Group 4 11:40am - 12:15pm



● **Venue** Hyakken Stone Wall Ruins, Climbing Wall  
【2<sup>nd</sup> floor, Onojo Cocoro-no-furusato-kan City Museum】

● **Fee** 70 yen (including insurance fee)

● **Items to bring** ◇ Socks ◇ Indoor shoes

● **Limit** 20 people per day \*First-come first-served basis  
\*5 people in each group  
\*One application is acceptable per person by each day.



● **How to apply** Call us or visit general information of the museum

\*Application by parents or grandparents is only acceptable.

● **Application deadline** Tue, Feb. 16<sup>th</sup>

## Panel Exhibition on Collaborative Projects

Based on the academic and cultural exchange agreement between Onojo Cocoro-no-furusato-kan City Museum and Museum of Kongju National University, panels about the outline of their collaborative projects on ancient mountain castles in Korea and Japan, Kongju ancient mountain castle, etc. will be exhibited.

● **Period** Tue, Feb. 16<sup>th</sup> - Sun, Mar. 7<sup>th</sup>

● **Venue** Joe Hall (lobby)  
【1<sup>st</sup> floor, Onojo Cocoro-no-furusato-kan City Museum】

## Science Class

We will conduct easy experiment and make crafts using everyday items as a subject.

● **Subject person** Elementary school students

\*Participants must be accompanied by one of their guardians.

● **Date** Sun, Mar. 21<sup>st</sup>

● **Time** ◇ 10:00am - 11:30am  
◇ 12:30pm - 2:00pm  
◇ 3:00pm - 4:30pm



● **Venue** Lecture Room  
【M2<sup>nd</sup> floor, Onojo Cocoro-no-furusato-kan City Museum】

● **Contents** Let's make a kaleidoscope!

● **Limit** 10 groups / each day

\*If applications exceed capacity, a drawing will be held.

\*We will notice the result of the drawing by Sun, Mar. 7<sup>th</sup>.

● **Fee** 500yen

● **Application Deadline** Fri, Feb. 26<sup>th</sup> by 5:00pm

● **How to apply** Send e-mail or fax to us with the name of event "Science Class", participant's name and guardian's name, grade, postal code and address, telephone number, e-mail address, preferred time written.

## Onojo Cocoro-no-furusato-kan City Museum

(3-8-3 Akebono-machi, Onojo City)

● **Closed** Every Monday

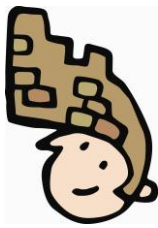
\*If Monday falls on a public holiday, the museum is closed on the following weekday.

● **Hours** 9:00am - 7:00pm

● **Notes** Please be sure to wear a mask when you visit the museum. As for children under 3 years old and people who may find it difficult to wear a mask, please let a staff member of the museum know.

**For application or further information, please contact  
Local Culture and Industry Promotion Section  
Tel: 092-580-1876 Fax: 092-573-7791  
E-mail: sangyo@city.onojo.fukuoka.jp**





# Joe's NEWS

Selected information from the city magazine "ONOJO"

Feb. 15th, 2021 issue (No.6)

## Let's go to "Star-dome-madoka"!

### Seasonal Event

#### Let's find the Lunar X, the letter X on the moon's surface!

● **Date and Time** Fri, Feb. 19<sup>th</sup> 6:00pm - 8:00pm

- **Contents** ◇ Observing the moon with a telescope
- ◇ Observing the stars in winter with a telescope



#### Let's watch the stars together!

● **Date and Time** Sat, Feb. 27<sup>th</sup> 7:00pm - 8:50pm

- **Contents** ◇ Observing the moon with a telescope
- ◇ Observing the stars in winter with a telescope

● **Venue** Kita Community Center, "Star-dome-madoka"

● **Fee** Free

\*Junior High School students and younger must be accompanied by guardians.

\*In the case of rain or cloudiness, a story telling will be held in a room.

\*No registration in advance necessary.

## About Cancellation of Events and Measures and Supports against Novel Coronavirus

\*Please practice preventive measures such as wearing a mask, checking your body temperature when you join events.

\*There are events which are cancelled or postponed and facilities which limit the usage to prevent novel coronavirus infection. For further information related to novel coronavirus infection, please refer to the HP of Onojo City or contact us.

### ● HP of Onojo City

About Novel Coronavirus

<http://www.city.onojo.fukuoka.jp/s022/010/20200206093749.html>

Cancellation or Postponement of Events

<http://www.city.onojo.fukuoka.jp/d001/20200221121745.html>

Reopening and Restriction of Facility Use

<http://www.city.onojo.fukuoka.jp/d001/0228.html>

## Consultation Service for Novel Coronavirus Infection

### ● Consultation for Visiting Medical Institution

'Chikushi Health and Welfare Environment Office (Consultation Call Center)' provides consultation service for the persons who may have been infected by novel coronavirus. If you have symptoms listed below, please contact 'Chikushi Health and Welfare Environment Office' immediately before visiting a medical institution. \*When you visit the clinic, please wear a mask and avoid using public transportation.

◇ Persons who have severe symptoms such as breathing difficulty, severely tired, high fever, etc.

◇ Persons whose symptoms are prone to easily get severe such as seniors and those who have chronic diseases and who have symptoms of colds such as fever, cough, etc.

◇ Persons who have symptoms of colds and been having symptoms of colds such as fever, cough, etc. (As to persons who have been having these symptoms for 4 days or more, consultation is absolutely required.)

[As to consultation in foreign language, please contact the number below.](#)

**Multilingual Call Center Fukuoka Asian Medical Center** TEL:092-286-9595

### Chikushi Health and Welfare Environment Office

TEL: 092-707-0524 \*Weekday only 8:30am - 5:00pm

TEL: 092-643-3288 \*Night time, Weekends and National Holidays

### ● Consultation for Other General Things

**Telephone Consultation Service by Ministry of Health, Labour and Welfare**

TEL: 0120-565653 (Toll-free) \*9:00am - 9:00pm

Joe'BOX



Don't feel alone.

Please email us at

[sangyo@city.onojo.fukuoka.jp](mailto:sangyo@city.onojo.fukuoka.jp)

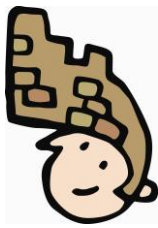
if you have any problems living in Onojo City.

For application or further information, please contact Local Culture and Industry Promotion Section

Tel: 092-580-1876 Fax: 092-573-7791

E-mail: [sangyo@city.onojo.fukuoka.jp](mailto:sangyo@city.onojo.fukuoka.jp)





# Joe's NEWS

Selected information from the city magazine "ONOJO"

Feb. 15th, 2021 issue (No.7)

## How to consult with a doctor and have a medical examination if you think you are infected with novel coronavirus

### Call and consult with a family doctor

\*If you do not have a family doctor, please call and consult with a medical institution near your home such as Self Defense Forces Fukuoka Hospital, Saiseikai Futsukaichi Hospital and Fukuoka Tokushukai Medical Center.  
\*If you have symptoms such as fever, please be sure to call the medical institution before visiting them.

In the case that you can have an examination and get tested for novel coronavirus at the medical institution you have consulted with.

In the case that you cannot have an examination and get tested for novel coronavirus at the medical institution you have consulted with or you cannot decide the medical institution you will consult with.

You visit the medical institution you have consulted with.

- ◇ Please be sure to make a reservation before visiting them.
- ◇ Please avoid using public transportation as much as you can when visiting a medical institution.
- ◇ Please wear a mask when having a medical examination.

### Consultation Center

◇ Chikushi Health and Welfare Environment Office

TEL: 092-707-0524

\*Weekday only 8:30am - 5:00pm

TEL: 092-643-3288

\*Night time, Weekends and National Holidays

As to consultation in foreign language, please contact the number below.

◇ Multilingual Call Center Fukuoka Asian Medical Center

TEL: 092-286-9595

For further information, please contact us.

They introduce a medical institution where you can have an examination and get tested for novel coronavirus.  
\*Please call the medical institution before visiting.

## We ask for your cooperation to prevent the spread of novel coronavirus infection

Each of us needs to have a responsibility for our actions and practice preventive measures thoroughly to protect our health and lives.

Practice basic preventive measures such as wear a mask, and...

- ◇ Wash and disinfect your hands well and frequently.
- ◇ Follow "cough etiquette"
- ◇ Ventilate spaces regularly.
- ◇ Keep your distance from others.
- ◇ Avoid the "Three Cs" (Closed spaces, Crowded places, Close-contact settings)
- ◇ Check your body temperature every morning. If you have symptoms like fever, cough, and or cold, please stay at home and take a rest.
- ◇ Take preventive measures thoroughly at gatherings.
- ◇ Refrain from going to places where they lack preventive measures.
- ◇ Register for the app, COCOA.



Joe'BOX



Don't feel alone.

Please email us at

[sangyo@city.onojo.fukuoka.jp](mailto:sangyo@city.onojo.fukuoka.jp)

if you have any problems living in Onojo City.

### Information on Opening Hours

- Feb. 15<sup>th</sup> Onojo Cocoro-no-furusato-kan City Museum will be CLOSED
- Feb. 17<sup>th</sup> Madokapia will be CLOSED
- Feb. 22<sup>nd</sup> Onojo Cocoro-no-furusato-kan City Museum will be CLOSED
- Feb. 27<sup>th</sup> Citizen Service Section will be open from 9:30am to 12:30pm

For application or further information, please contact Local Culture and Industry Promotion Section

Tel: 092-580-1876 Fax: 092-573-7791

E-mail: [sangyo@city.onojo.fukuoka.jp](mailto:sangyo@city.onojo.fukuoka.jp)

