

Joe's NEWS

Selected information from the city magazine "ONOJO"

Apr. 15th, 2021 issue (No.1)

Novel Coronavirus (COVID-19) Vaccination for Elderly Residents

We will send vaccination ticket which is necessary to get the COVID-19 vaccine by post. You need the ticket to get the vaccine. Therefore, please keep the ticket carefully until the vaccination starts.

●Subject Person

Persons aged 65 or over who are registered as residents in Onojo City (Persons born on April 1st, 1957 or before)

●Documents to Be Sent

- ◇Notification about COVID-19 Vaccination
- ◇Instruction for COVID-19 Vaccination
- ◇COVID-19 vaccination ticket
- ◇2 sheets of Prevacination Screening Questionnaire to fill in your condition and medical history before the vaccination
- *Use one sheet for one vaccination
- ◇Vaccination Schedule such as days and time in each vaccination venue, reservation start date
- *Vaccination venues are Sukoyaka Koryu Plaza, Minami Community Center and Kita Community Center.
- *The documents will be sent during the period from the middle to the end of April. (Subject to Change)



When you receive the COVID-19 vaccination ticket,

- ①Check the days which are available for you to get vaccinated on the vaccination schedule.
 - ②Make a reservation by phone or online.
 - ③Fill in the prevaccination screening questionnaire.
- *If you are under treatment or have concerns about your health condition, please consult with your family doctor before receiving the vaccination.

(Continued on the right column)

Novel Coronavirus (COVID-19) Vaccination for Elderly Residents

For smooth Vaccination

- ◆Please bring the COVID-19 vaccination ticket without removing a sticker.
- ◆Please bring your medical record handbook. (If you have)
- ◆Please fill in the prevaccination screening questionnaire beforehand to avoid congestion at a vaccination venue.
- ◆COVID-19 vaccines are injected in your shoulder. Please wear clothes that make it easy to access your shoulders such as T-shirt.

*This notification is based on the information as of April 2nd. Therefore, it might be changed in the future.

For details, please contact us.

About Cancellation of Events and Measures against Novel Coronavirus

- *Please practice preventive measures such as wearing a mask, checking your body temperature when you join events.
- *There are events which are cancelled or postponed to prevent novel coronavirus infection. For further information related to novel coronavirus infection, please refer to the HP of Onojo City or contact us.

●HP of Onojo City

About Novel Coronavirus

<http://www.city.onojo.fukuoka.jp/s022/010/20200206093749.html>

Cancellation or Postponement of Events

<http://www.city.onojo.fukuoka.jp/d001/20200221121745.html>

Facility Opening Hours

<http://www.city.onojo.fukuoka.jp/d001/0228.html>

Joe'BOX



Don't feel alone.
Please email us at
sangyo@city.onojo.fukuoka.jp
if you have any problems living in Onojo City.

For application or further information, please contact Local Culture and Industry Promotion Section
Tel: 092-580-1876 Fax: 092-573-7791
E-mail: sangyo@city.onojo.fukuoka.jp



Please follow rules when you dispose of garbage

Please place your garbage on designated days and time.
Do you know days for disposing of non-burnable garbage? If not, please confirm the days in the area you live.

When you dispose of garbage please follow rules.
(Notice)

- ◆ Place garbage in a designated area until 10 o'clock at night
- ◆ Tie up the top of a city-designated waste disposal bag firmly
- ◆ Sort garbage correctly
- ◆ Check garbage collection days in the area you live



- **Bottles and Cans** 2nd and 4th designated days of the month
- **Other non-burnable garbage** 3rd designated day of the month
- **Pet bottles (Plastic bottles) and White Plastic Trays** 1st and 3rd designated days of the month

For further details, please refer to 「ごみの正しい出し方」 (How to dispose of your garbage in Japanese) inserted in the March 15th issue of the city magazine "ONOJO" or the following website:

<http://www.city.onojo.fukuoka.jp/s022/010/020/010/020/030/93873.html>

*If you cannot find the collection days and dates in your area in the leaflet, please contact us.

Distribution of 2021's "健康パンフレット" (Leaflet about Health and Medical Check-Up, Japanese version)

The leaflet will be distributed together with the Apr. 15th issue of the city magazine "Onojo".

- **Contents** ◇ Schedule and fees for Medical check-up for adults ◇ Health promotion class ◇ Health promotion program for the elderly ◇ Preventive vaccinations for adults ◇ Health Consultation ◇ Nutrition Consultation

Garbage No-collection Dates

Garbage will not be collected on the following dates:

Mon, May 3rd through Wed, May 5th, 2021

*Garbage will be collected as usual on or after Thu, May 6th.

For further details, please refer to the Apr.15th issue of the City Magazine "Onojo" (Written in Japanese) or contact us.

Garbage No-collection Dates and Rescheduled Collection Dates

Type of Garbage	Burnable Garbage	Pet bottles (Plastic bottles) and White Plastic Trays		
		Areas (regular collection on Monday)	Areas (regular collection on Tuesday)	Area (regular collection on Wednesday)
No-collection Date	Mon, May 3 rd -Wed, May 5 th	Mon, May 3 rd	Tue, May 4 th	Wed, May 5 th
Rescheduled Collection Date	No rescheduled collection date	Thu, May 6th	Fri, May 7th	Sun, May 2nd
Subject Area	all areas in Onojo City	<ul style="list-style-type: none"> ◇ Shimooridanchi 1-3chome ◇ Oaza Naka 1-3chome ◇ Naka 1-3chome ◇ Otoganadai 1-3chome ◇ Otogana 1-3chome ◇ Mikasagawa 1,4chome ◇ Oaza Otogana 5chome ◇ Minamigaoka 1-7chome 	<ul style="list-style-type: none"> ◇ Kwarada 1-5chome ◇ Akebono-machi 1-3chome ◇ Mizuho-machi 1-4chome ◇ Otoganahigashi 1-4chome ◇ Oike 1,2chome ◇ Kawakubo 1-3chome ◇ Mikasagawa 5chome ◇ Tsutsujigaoka 1-6chome ◇ Miyanodai 	<ul style="list-style-type: none"> ◇ A part of Oaza Kamiiori in Kamiiori Ward ◇ Kamiiori 1-5chome ◇ Shimoori 5chome ◇ Chuo 1,2chome ◇ Mikasagawa 2,3chome ◇ Zasshonokumamachi 1-5chome ◇ Sakae-machi 1-3chome ◇ Wakakusa 1,2chome ◇ Tsukinoura 1-5chome

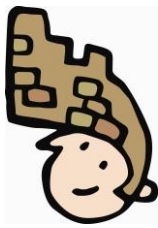
Joe'BOX



Don't feel alone.
Please email us at sangyo@city.onojo.fukuoka.jp
if you have any problems living in Onojo City.

For application or further information, please contact Local Culture and Industry Promotion Section
Tel: 092-580-1876 Fax: 092-573-7791
E-mail: sangyo@city.onojo.fukuoka.jp





Joe's NEWS

Selected information from the city magazine "ONOJO"

Apr. 15th, 2021 issue (No.3)

Nobinobi Hiroba

Why don't you experience parent-child play with our day-care center staff?

● **Subject Person** Children 1 - 2 years and their guardians living in Onojo City

*Please consult as to participation of siblings.

● Date and Time



Date	Time	Venue
Mon, May 10 th	1:45pm - 2:45pm (Reception: 1:30pm-)	Reiwa Kodomo Joho Center(Reiwa Children Information Center), Kosodate-oen (support for child raising) Floor (Sukoyaka Koryu Plaza 3F)
Mon, May 17 th		
Mon, May 31 st		

*Multiple applications are not acceptable.

● **Contents** Reading stories, Parent-child play, Drawing

● **Fee** free ● **Limit** 15 groups / each day (First-come first-served basis)

● **Application Period** from Wed, Apr. 21st to Tue, Apr. 27th
(9:00am - 3:00pm)

Payment of school lunch fees

School lunches are provided at elementary school by calculating nutritional value and milk is provided at junior high school. School lunch fees at junior high school raises from April, 2021 due to a rise in price of milk. School lunch fees at elementary school are the same as last year.

● **School lunch fees (monthly fee) (April, 2021-March, 2022)**

- ◆ Elementary school 4,600 yen
- ◆ Junior high school 850 yen

Night time and Holiday Doctors (Monthly)

We provide the information on Night time and Holiday Doctors (Monthly) in English on the website of Onojo City. Please check the following site and make use of it in the case of emergency at night and on holidays.

URL <http://www.city.onojo.fukuoka.jp/s022/010/020/010/020/050/93875.html>

*Please visit a medical institution available at night time or on holidays only in case of emergency. *As the information is subject to change, please confirm availability beforehand with the medical institution you would like to visit.

Akachan (baby) Hiroba

Come join us and have a relaxing time with other mothers!



● **Subject Person** 3 months -12 months old child and mother

*It is not acceptable to bring siblings.

● **Contents** ◇Talk by health nurse, nursery teacher, midwife and nutritionist

◇Parent-child play ◇Reading stories ◇Parenting consultation

Subject Person	Date and time	Venue
Those who live in South / East Community Area	Mon, May 10 th 10:30am-12:00pm	Reiwa Kodomo Joho Center(Reiwa Children Information Center), Kosodate-oen (support for child raising) Floor (Sukoyaka Koryu Plaza 3F)
Those who live in North Community Area	Mon, May 17 th 10:30am-12:00pm	
Those who live in Central Community Area	Mon, May 24 th 10:30am-12:00pm	

(Reception: from 10:00am -) *Please attend in the community area you live.

● **Fee** Free

● **Items to bring** swaddle blanket or bath towel

*No registration in advance necessary *Limited Parking

Onojo Cocoro-no-furusato-kan City Museum

Visitors are able to learn the history of Onojo City easily and widely through exhibitions.

● **Closed** Every Monday

*If Monday falls on a public holiday, the museum is closed on the following weekday.

● **Hours** 9:00am - 7:00pm

● **Admission** Permanent Exhibition: Free

*Special Exhibition: Charged

● **Notes** Please be sure to wear a mask when you visit the museum. As for children under 3 years old and people who may find it difficult to wear a mask, please let a staff member of the museum know.

For application or further information, please contact Local Culture and Industry Promotion Section

Tel: 092-580-1876 Fax: 092-573-7791

E-mail: sangyo@city.onojo.fukuoka.jp



JOE QUEST

"JOE QUEST" is a free app for mobile phone and tablet. There are missions consisted of historical sites and shops in the City. You can join "JOE QUEST" by scanning the QR codes which are set in each place and get points. When you earn enough points, you will be able to exchange these points for goods such as Ono Joe character goods and local specialities.

How to join

1. Download the QR code of "JOE QUEST" and then start it.
2. Scan the QR codes which are set in each place and get points.
3. Exchange points you earned for goods such as Ono Joe character goods, and local specialities.



QR code of "JOE QUEST"

Available on the App Store



ANDROID APP ON Google play



Goods



Onojo Trail

There are 7 trail courses and you can enjoy landscape in Onojo. The routes are set to connect scenery, beautiful nature, historical sites, townscapes and so on. You can get the trail maps at general information in Onojo City Hall and each community center. Why don't you walk around and explore the attraction of Onojo?

Onojo Trail Map



For further details, please contact us.

Recruiting Volunteers to Support Japanese at Elementary and Junior High School

We are recruiting volunteers who can provide language support to students who do not get used to speaking Japanese. It is to help those students to spend school life smoothly. The volunteers need registration. Depending on the request from schools, we dispatch volunteers to the schools.

●Subject Person

Persons who can communicate in foreign languages and Japanese, translate foreign language into Japanese and vice versa and are cooperative to work as volunteers

*Any language is acceptable.

●Contents

- ◆Support daily conversation at school
- ◆Translate and tell teacher's instruction during class and support presentation of the student
- ◆Support to tell instruction and message about daily activities by teachers
- ◆Support the conversation between teacher and parent or guardian

●Venue elementary and junior high school in Onojo City

●Hours within 3 hours per time

●Reward 2,500 yen per time

●Application acceptance

Education Promotion Section (5F, Onojo City Office)

*Application is acceptable at any time.



Joe'BOX



Don't feel alone.
Please email us at sangyo@city.onojo.fukuoka.jp
if you have any problems living in Onojo City.

For application or further information, please contact Local Culture and Industry Promotion Section
Tel: 092-580-1876 Fax: 092-573-7791
E-mail: sangyo@city.onojo.fukuoka.jp



Consultation Service for Novel Coronavirus Infection

● Consultation for Visiting Medical Institution

'Chikushi Health and Welfare Environment Office (Consultation Call Center)' provides consultation service for novel coronavirus infection. If it is suspected that you might have been infected with the virus, please contact 'Chikushi Health and Welfare Environment Office' immediately before visiting a medical institution.

[As to consultation in foreign language, please contact the number below.](#)

Multilingual Call Center Fukuoka Asian Medical Center TEL : 092-286-9595

Chikushi Health and Welfare Environment Office

TEL : 092-707-0524 *Weekday only 8:30am - 5:00pm

TEL : 092-643-3288 *Night time, Weekends and National Holidays

● Consultation for Other General Things

Telephone Consultation Service by Ministry of Health, Labour and Welfare

TEL : 0120-565653 (Toll-free) *9:00am - 9:00pm

Mountain Walking - Let's walk around Mt. Shioji! -

● **Date and Time** Sat, May 22nd 10:00am - 2:00pm (Reception 9:30am-)

*The event will be held little rain. In the case of severe weather, lecture about forest and plants will be held at Shioji Kenmin-no-mori Center.

● **Activities** Walking around Mt. Shioji with a forest instructor,
Observing plants

● **Limit** 30 people (First- come first-served basis)

● **Meeting point** Shioji Kenmin-no-mori Center

● **Fee** Free

● **Necessary Items** Lunch, Drink, Hat, Cotton work gloves, Picnic blanket,
Towel, Plastic bags, etc.

● **Application Period** Sat, May 1st - Sat, May 15th
*Closed on Thu, May 6th and Mon, May 10th
(Reception 9:00am - 5:00pm)

*Please join wearing comfortable shoes and clothes.

We ask for your cooperation to prevent the spread of novel coronavirus infection

Each of us needs to have a responsibility for our actions and practice preventive measures thoroughly to protect our health and lives.

- ◇ Wash and disinfect your hands well and frequently
- ◇ Follow "cough etiquette", Wear a mask
- ◇ Ventilate spaces regularly
- ◇ Keep your distance from others
- ◇ Avoid the "Three Cs" (Closed spaces, Crowded places, Close-contact settings)
- ◇ Check your body temperature every morning. If you have symptoms like fever, cough, and or cold, please stay at home and take a rest.
- ◇ Take preventive measures thoroughly at gatherings
- ◇ Refrain from going to places where they lack preventive measures
- ◇ Register for the app, COCOA



Information on Opening Hours

Apr. 19th Onojo Cocoro-no-furusato-kan City Museum will be CLOSED

Apr. 21st Madokapia will be CLOSED

Apr. 24th Citizen Service Section will be open from 9:30am to 12:30pm

Apr. 26th Onojo Cocoro-no-furusato-kan City Museum will be CLOSED

Joe'BOX



Don't feel alone.

Please email us at

sangyo@city.onojo.fukuoka.jp

if you have any problems living in Onojo City.

For application or further information, please contact Local Culture and Industry Promotion Section

Tel: 092-580-1876 Fax: 092-573-7791

E-mail: sangyo@city.onojo.fukuoka.jp

